



## Bletchley Court

Stanmore

Asking price £299,950

Situated in an extremely popular development, this well presented modern one bedroom apartment which secure entryphone system is conveniently located moments away from the shopping amenities and transport links of Canons Park.

The property is comprised on the ground floor of a welcoming entrance hallway, spacious and light filled open plan modern fitted kitchen/reception room, double bedroom with storage cupboard and a well appointed bathroom. The property also comes with a large storage cupboard in the hall and access to the well maintained communal gardens.

Bletchley Court is a three minute walk to Canons Park Station where the Jubilee line offers direct access into Central London and Docklands within thirty minutes. Stanmore Broadway is a short distance away and offers a variety of shops, restaurants and coffee shops.

Harrow Council Tax Band C  
Leasehold 113 years  
Service charge £2,472 pa

### Viewing

Please contact our Davidson Frost-Wellings Office on 020 8954 8806 if you wish to arrange a viewing appointment for this property or require further information.

- One bedroom
- Ground floor
- Open plan kitchen
- Ample Storage Cupboards
- Communal Gardens
- Chain free



1



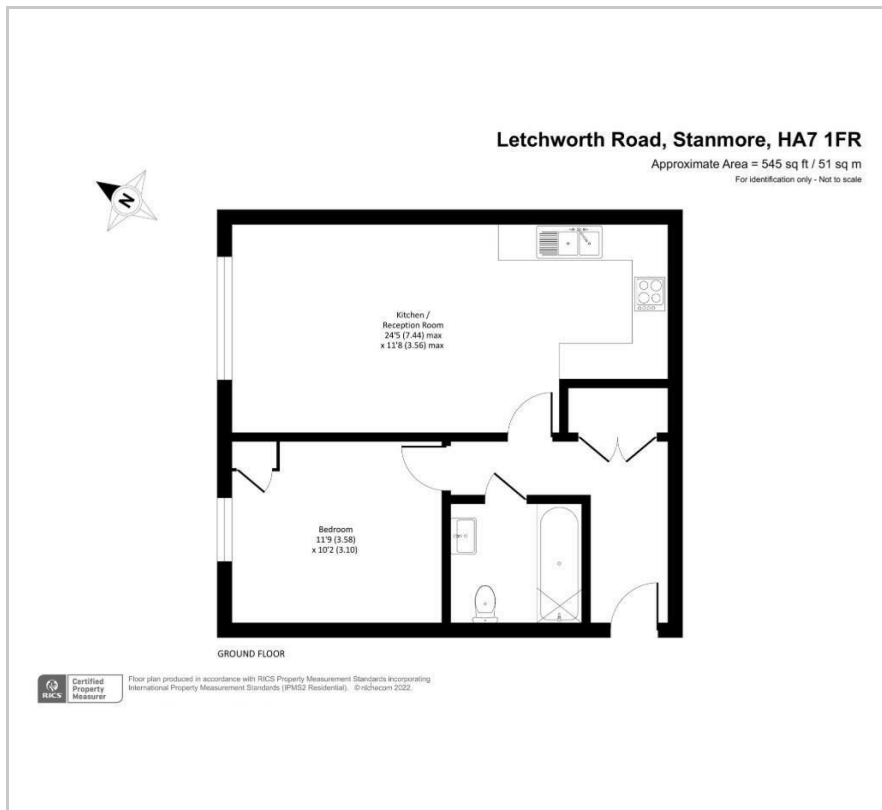
1



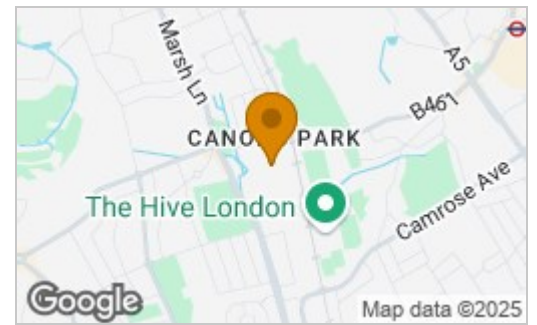
1



## Floor Plan



## Area Map



### Energy Efficiency Rating

|  | Current                 | Potential |
|--|-------------------------|-----------|
| <i>Very energy efficient - lower running costs</i> |                         |           |
| (92 plus) <b>A</b>                                 |                         |           |
| (81-91) <b>B</b>                                   |                         |           |
| (69-80) <b>C</b>                                   |                         |           |
| (55-68) <b>D</b>                                   |                         |           |
| (39-54) <b>E</b>                                   |                         |           |
| (21-38) <b>F</b>                                   |                         |           |
| (1-20) <b>G</b>                                    |                         |           |
| <i>Not energy efficient - higher running costs</i> |                         |           |
| <b>England &amp; Wales</b>                         | EU Directive 2002/91/EC |           |



These particulars, whilst believed to be accurate are set out as a general outline only for guidance and do not constitute any part of an offer or contract. Intending purchasers should not rely on them as statements of representation of fact, but must satisfy themselves by inspection or otherwise as to their accuracy. No person in this firm's employment has the authority to make or give any representation or warranty in respect of the property.